

MAGNOLIA 54" SINGLE SINK BASE CABINET

ARIEL

BASE CABINET DIMENSIONS

54" W x 21.5" D x 34.5" H



FEATURES

- Solid wood frame & plywood panels
- Dovetail drawers and joints
- Soft closing doors & drawers

HARDWARE FINISHES*



Brushed Nickel



Satin Brass



Matte Black



Polished Chrome

*Hardware comes preinstalled with the illustrated option.
Other finishes are available on our online store if you prefer a different one.

AVAILABLE COLORS



White

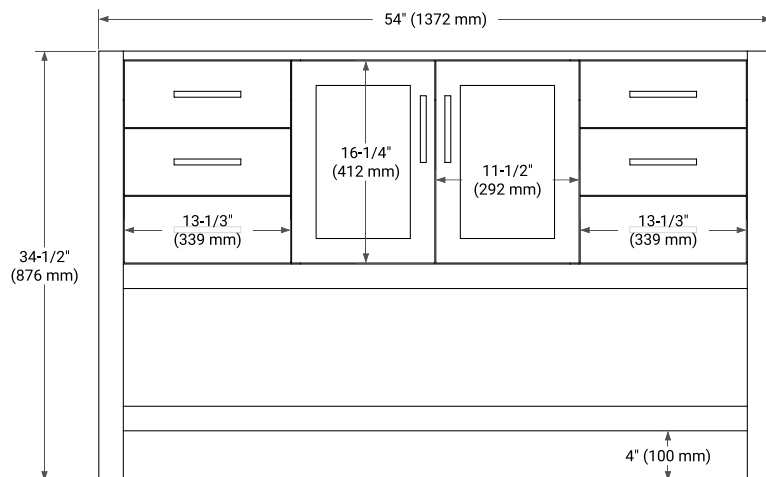


Grey

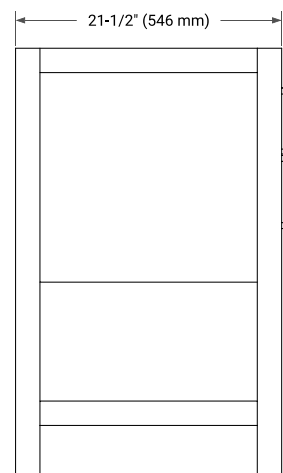


Midnight Blue

FRONT VIEW



SIDE VIEW



PLAN VIEW

