

## MAGNOLIA 48" SINGLE SINK BASE CABINET

# ARIEL

### BASE CABINET DIMENSIONS

48" W x 21.5" D x 34.5" H



### FEATURES

- Solid wood frame & plywood panels
- Dovetail drawers and joints
- Soft closing doors & drawers

### HARDWARE FINISHES\*



Brushed Nickel    Satin Brass    Matte Black    Polished Chrome

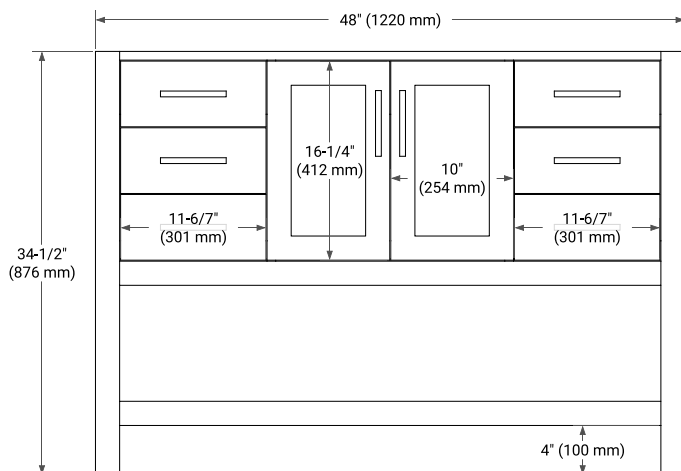
\*Hardware comes preinstalled with the illustrated option.  
Other finishes are available on our online store if you prefer a different one.

### AVAILABLE COLORS

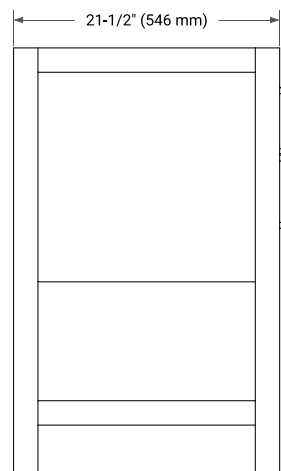


White    Grey    Midnight Blue

### FRONT VIEW



### SIDE VIEW



### PLAN VIEW

